

## Research Websites

10 kid friendly places for you to check out!

Key tip: type exactly what you see! Ask for help finding special characters.

<https://www.worldwildlife.org/>

Click on species and then endangered species (this will help you pick an animal)

<http://a-z-animals.com/animals/endangered/>

<http://www.animalfactguide.com/animal-facts/>

<http://www.kidsplanet.org/factsheets/map.html>

Clicking links on this site will take you to a new site, so be sure to write down the new site's URL. It will be found at the top of your page in a white box usually.

<http://www.kidsdiscover.com/spotlight/endangered-species/>

<http://www.konicamimota.com/kids/endangered-animals/index.html>

Click on endangered animal's list and search for animal by name.

Site includes fun videos about animals.

<http://www.fws.gov/endangered/>

Only includes endangered animals found in America

<https://www.newscientist.com/article/tn9962-a-to-z-endangered-species/>

This site has a collection of real newspaper articles about endangered species.

<https://ypfe.org.uk/>

Check out fun facts for kids.

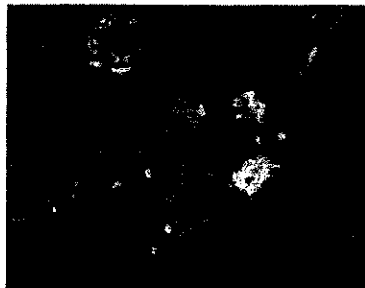
<http://www.safesearchkids.com/>

Find your own fun websites through this kid friendly search engine!

[www.hawbimoutteacher.com](http://www.hawbimoutteacher.com/)

Links on Google Classroom

NAME	ENDANGERED ANIMAL PROJECT
Completed packet	15
Title	1
name	1
colorful	2
neat	2
Picture of animal	1
animal common name	1
animal scientific name	1
physical features of animal	1
where does this animal live	1
diet	1
fun facts	2
reason endangered	1
30-27 = A 26-24 = B 23-21 = C 20-18 = D 17-0 = F	30



Draw or paste a picture of your animal below.



**Resource:**

Write down the name of the book or the website where you found your information.

**Genus:**

a group of related animals that share many common characteristics

**Species:**

a group of animals that have the same characteristics and can have babies with each other.

**Population**

is the number of animals left living today.

Common Name of Animal: \_\_\_\_\_

Scientific Name (genus then species): \_\_\_\_\_

Population: \_\_\_\_\_

Resource: \_\_\_\_\_

# Appearance

Dig deep into how your animal looks...

Describe the physical features of this animal.

What kind of adaptations has this animal made due to its environment? (example: Beavers have sharp teeth to eat their prey and for protection)

What does this animal eat? Does anything eat this animal?

Resources: \_\_\_\_\_

# Habitat

Dig deep into where your animal lives...

Where can this animal be found?

---

---

---

---

---

---

---

---

---

---

Explain what kind of biome this animal lives in?

(example: desert, forest, freshwater, grassland, rainforest, tundra, ocean)

---

---

---

---

---

---

---

---

---

---

Describe where and how this animal sleeps.

---

---

---

---

---

---

---

---

---

---

Resources:

---

---

---

---

---

---

---

---

---

---

[www.thoughtfulteacher.com](http://www.thoughtfulteacher.com)

# OFFSPRING Baby Facts

Don't cry about it!  
Just finish this page! ☺

How often are babies born to this animal?

---

---

---

---

---

---

---

---

---

---

How long is the mother's gestation time? In other words, how long does she carry the baby or babies?

---

---

---

---

---

---

---

---

---

---

How many babies does this animal usually have?

---

---

---

---

---

---

---

---

---

---

How big are babies when they are born?

---

---

---

---

---

---

---

---

---

---

Do the babies have a special name?

---

---

---

---

---

---

---

---

---

---

How long do the babies stay with their moms?

---

---

---

---

---

---

---

---

---

---

Resources:

---

---

---

---

---

---

---

---

---

---

[www.thoughtfulteacher.com](http://www.thoughtfulteacher.com)

List 10 new fun facts you've learned about your animal!

www.thefairyprintshop.com

# Wrap Up!

Final Thoughts!

Why is your animal endangered? What's being done about it?

In the box below draw a mini poster or list ideas for how readers of this report can save your animal today!

Resources:

www.thefairyprintshop.com